

ATHENA TOUCH IR Multi Touch Screen Installation

Preparation:

- 4 pieces IR aluminum frames with PCB board inside
- 2 aluminum angles
- 8 screws
- 1 Screw driver



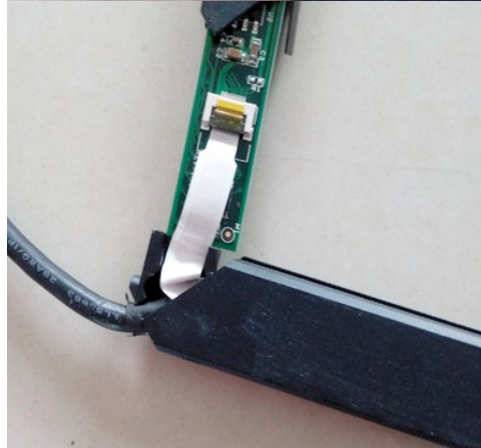
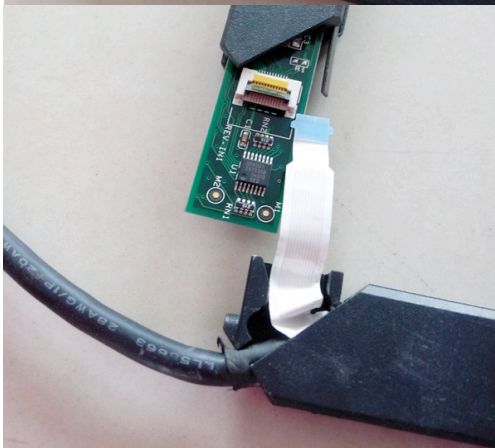
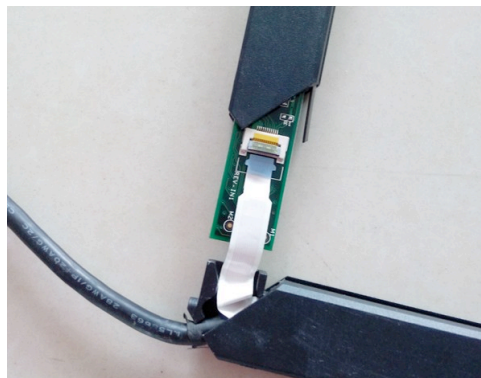
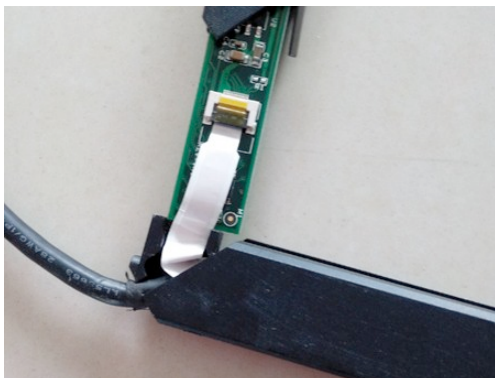
Steps:

1. Put all the frames on a flat surface in the right order, as shown in the following picture:



2. Start assembling from the bottom left corner, which has a USB wire:

a, take pcb board out from the left short aluminum frame; b, back off the clip on the green PCB board; c, plug the connecting wire under the clip; d, press down the clip to cover the blue part of the wire. Please make sure the wire is clipped here tightly.



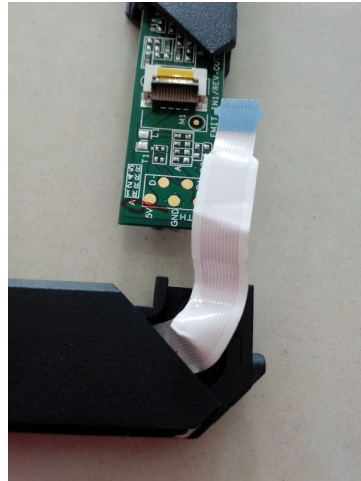
3. Gather the left and bottom frame together, and fasten them with 2 screws.



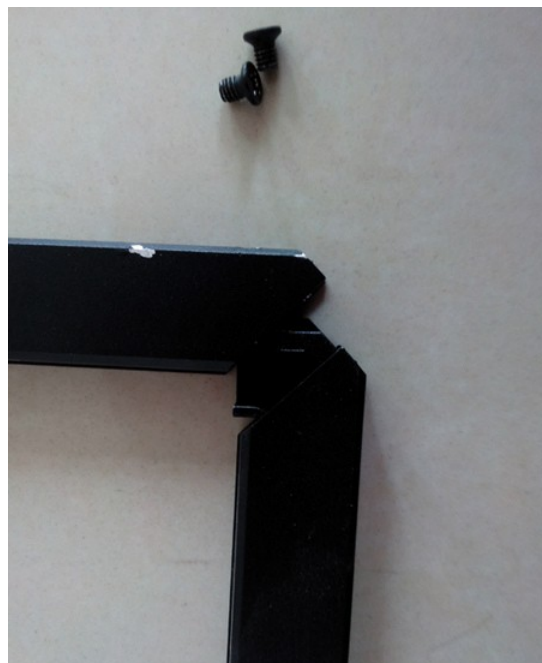
4. Next is the top left corner. Put the aluminum angle under the connecting wire. Fix the wire with the clip. Then fasten the screws.



5. Following is the bottom right corner. Put the aluminum angle under the connecting wire. Fix the wire with the clip. Then fasten the screws.



6. Last is the top right corner. There is no wire to connect. Just fasten the screws.



7.Finished assembly as pictured:

